

# **NOTE READING SCHOOL FOR VIOLINISTS VOL. 1**

Kerstin Wartberg

# OVERVIEW

The book is structured in 22 steps. In this volume, children learn notes on all strings in the first finger pattern.



## ACTIVITIES IN EACH STEP

Rhythm Exercises

Pitch Exercises







Preparation for the  
ensemble piece

Duet or Canon



In the first two chapters, practice possibilities are presented in detailed notation, with each activity given an icon. The subsequent chapters use only the icons to indicate these various possibilities, allowing the teacher to tailor the materials to the unique needs of each student. At the end of the book, you will find “Dice Games” that help children build confidence in reading music in a playful way.

	<b>Rhythm exercises</b>	performed with percussion instruments, clapping, and chanting
	<b>Pitch exercises</b>	performed with singing (or speaking if out of vocal range)
	<b>Rhythm and pitch exercises</b>	performed with the violin
	<b>Dice</b>	an invitation to discover additional practice possibilities (see page 67).

# RHYTHM EXERCISES

## Step No. 1



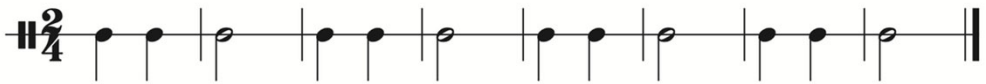
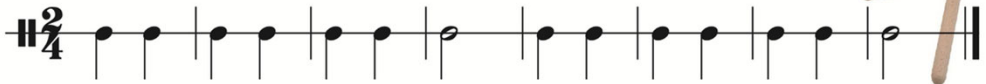
Quarter note = 1 beat

Half note = 2 beats

Down Bow  
Up Bow



1A. Clap and chant the rhythm.



A. Clap and chant the rhythm.



# PITCH EXERCISES

1C. Sing the notes with their note names.



Sing: **D D D D E E E E**



C. Sing the notes with their note names.



# PREPARATION FOR THE ENSEMBLE PIECE

## ☀ Preparation for the duet

1E. Play the rhythm on the open **D** string.



Musical notation for the first exercise. It consists of two staves in 2/4 time with a key signature of one sharp (F#). The first staff has a square rhythm symbol above the first beat, a 'V' above the second beat, and a red 'D' below the first note. The second staff has a square rhythm symbol above the first beat and a 'V' above the second beat.

Variation on the open **D** string

Musical notation for the variation. It consists of two staves in 2/4 time with a key signature of one sharp (F#). The first staff has a square rhythm symbol above the first beat, a 'V' above the second beat, and a red 'D' below the first note. The second staff has a 'V' above the first note, a 'V' above the second note, and a 'V' above the fourth note.

E. Play the rhythm on an open string.





# PREPARATION FOR THE ENSEMBLE PIECE

1F. Play with the correct notes and rhythm.



Two staves of musical notation in G major (one sharp) and 2/4 time. The first staff shows a sequence of notes: D (quarter), E (quarter), F# (quarter), G (quarter), A (quarter), B (quarter), C# (quarter), D (quarter). A 'V' (violin) symbol is above the first measure. The second staff shows the same sequence of notes, with a 'V' symbol above the first measure.

Variation on the D string with **D** and **E**

Two staves of musical notation in G major (one sharp) and 2/4 time. The first staff shows a sequence of notes: D (quarter), E (quarter), F# (quarter), G (quarter), A (quarter), B (quarter), C# (quarter), D (quarter). A 'V' (violin) symbol is above the first measure. The second staff shows the same sequence of notes, with 'V' symbols above the first and fifth measures.

F. Play with the correct notes and rhythm.





# ENSEMBLE PIECES WITH TWO-PART STAVES

## ☀️ First Duet on the D string (with **D** and **E**)



Student\* ☀️

Teacher

Musical notation for the first duet on the D string. It consists of two staves, one for the Student and one for the Teacher. Both staves are in treble clef with a key signature of two sharps (F# and C#) and a time signature of 2/4. The music is written on a single line of a grand staff. The notes are: D4 (quarter), E4 (quarter), F#4 (quarter), G4 (quarter), A4 (quarter), B4 (quarter), C#5 (quarter), D5 (quarter). There are two 'V' markings above the staff, one above the D4 note and one above the E4 note. A sun icon is placed at the beginning of the Student's staff.

Musical notation for the second duet on the D string. It consists of two staves, one for the Student and one for the Teacher. Both staves are in treble clef with a key signature of two sharps (F# and C#) and a time signature of 2/4. The music is written on a single line of a grand staff. The notes are: D4 (quarter), E4 (quarter), F#4 (quarter), G4 (quarter), A4 (quarter), B4 (quarter), C#5 (quarter), D5 (quarter). A sun icon is placed at the beginning of the Student's staff.

Playing the duets and canons together in solo or group settings is the highlight of each chapter and enhances motivation for learning to read music. It also opens up possibilities to learn new pieces and provides early chamber music and ensemble skills.



*Step No. 14*

D E F# G A A B

**Rhythm Canon in three parts**

Practice in unison or as a canon.



Rhythm Canon in three parts

