

# O Most Holy One / O du fröhliche

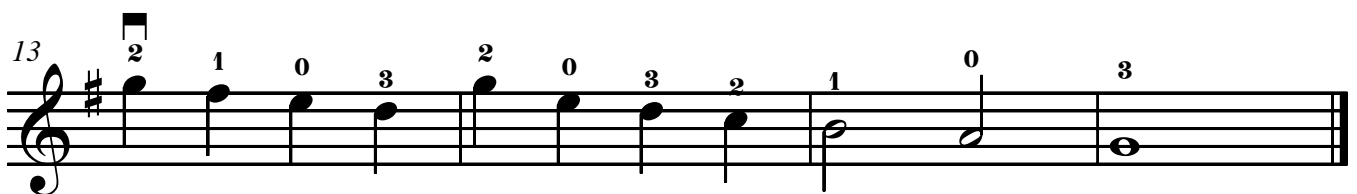
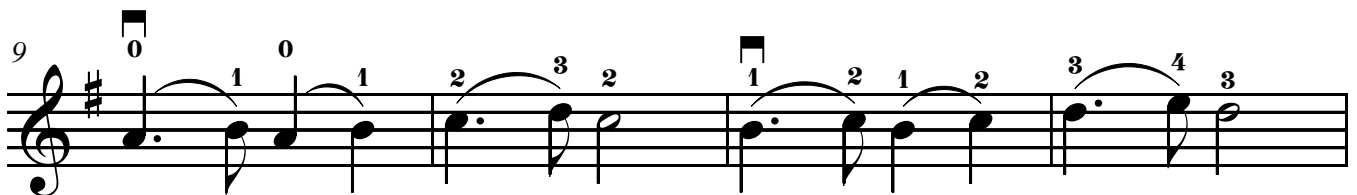
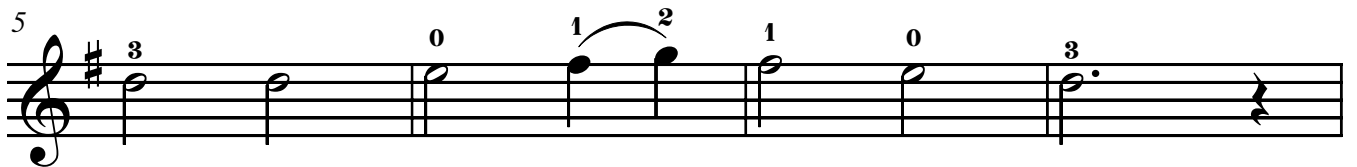
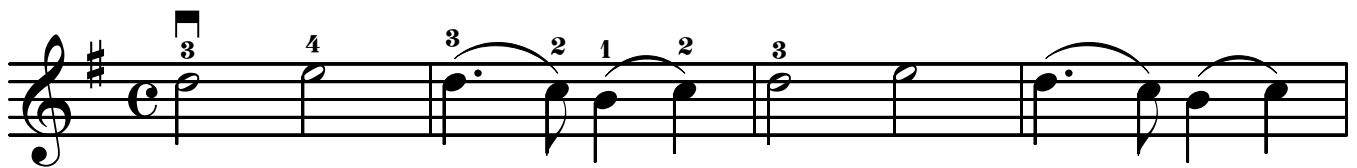
Edited by / Herausgegeben von  
Kerstin Wartberg

**E:** ---00

**A:** ---00---0---0

**D:** ---0---00---0

*Sicilian Melody, 18th century*  
*Sizilianische Volksweise, 18. Jahrh.*



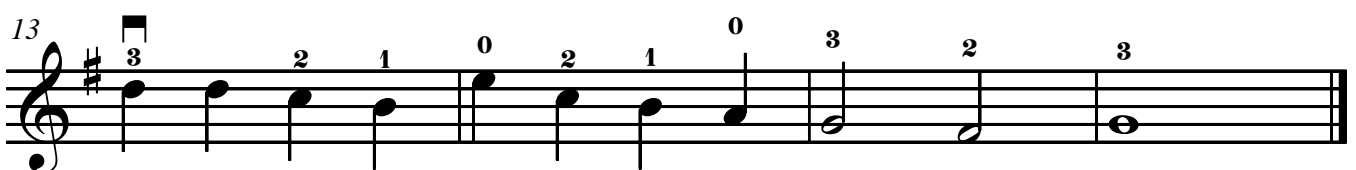
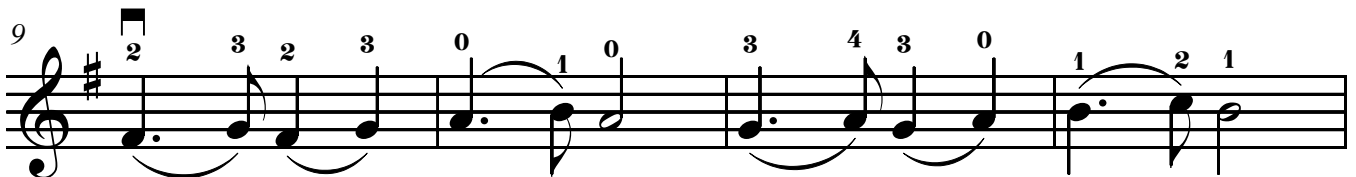
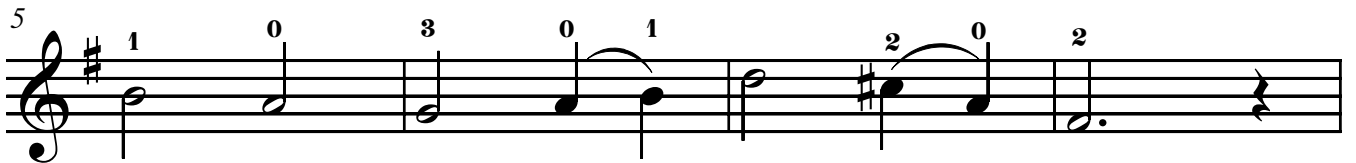
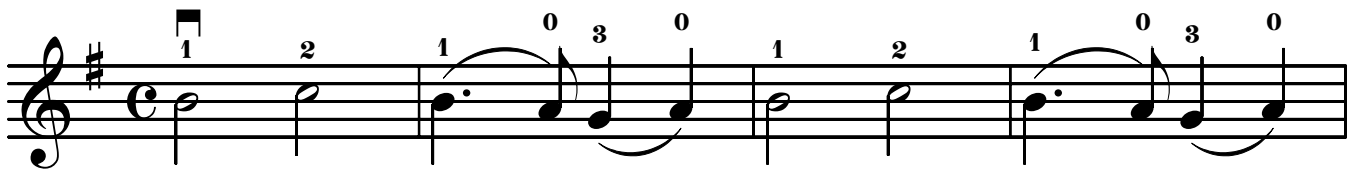
# Violin II

## O Most Holy One / O du fröhliche

Edited by / Herausgegeben von  
Kerstin Wartberg

1 2 2 3 4  
**A: --0000--0**  
**D: --0--00--0**  
1 2 3 4

*Sicilian Melody, 18th century*  
*Sizilianische Volksweise, 18. Jahrh.*



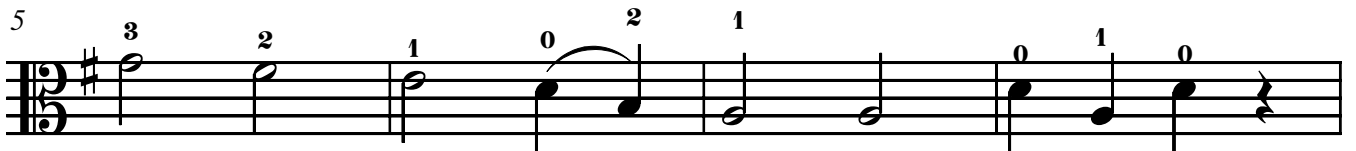
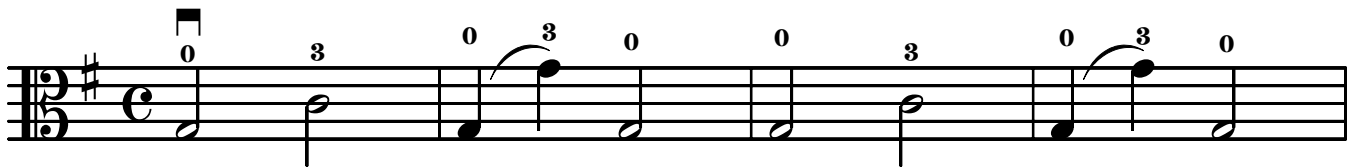
# O Most Holy One / O du fröhliche

Edited by / Herausgegeben von  
Kerstin Wartberg

**D: --O--OO--O**

**G: --O--OO--O**

*Sicilian Melody, 18th century*  
*Sizilianische Volksweise, 18. Jahrh.*



# O Most Holy One / O du fröhliche

Edited by / Herausgegeben von Kerstin Wartberg

*Sicilian Melody, 18th century*  
*Sizilianische Volksweise, 18. Jahrh.*

Violin I  
Violin II  
Viola  
Piano

This system contains the first five measures of the piece. It features four staves: Violin I, Violin II, Viola, and Piano. The key signature is one sharp (F#) and the time signature is common time (C). The Violin parts play a melodic line with eighth and quarter notes, while the Viola and Piano provide harmonic support with chords and bass lines.

VI. I  
VI. II  
Va.  
Piano

This system contains measures 6 through 10. It features four staves: Violin I, Violin II, Viola, and Piano. A measure rest is indicated above measure 7 for the Violin I part. The Piano part continues with harmonic accompaniment, including some chords with accidentals.

VI. I  
VI. II  
Va.  
Piano

This system contains the final five measures of the piece, marked with a double bar line and a repeat sign at the end. It features four staves: Violin I, Violin II, Viola, and Piano. The music concludes with sustained notes in the Violin and Viola parts and a final chord in the Piano.