

O Most Holy One / O du fröhliche

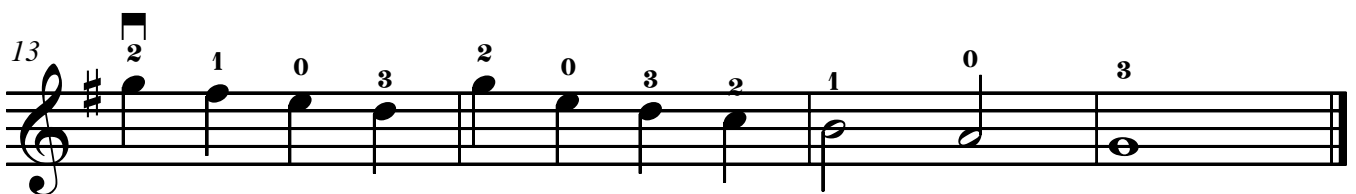
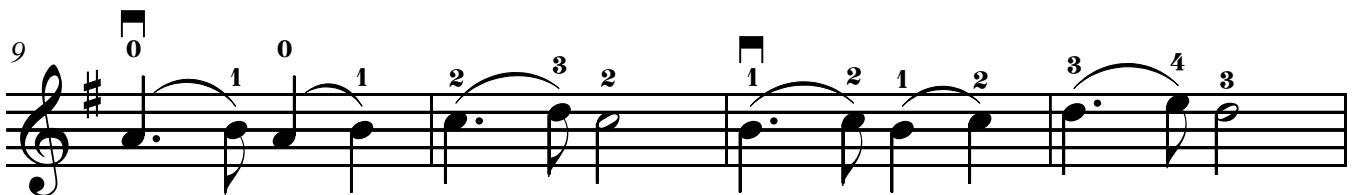
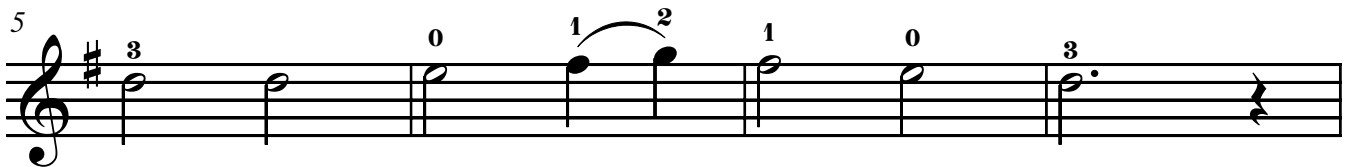
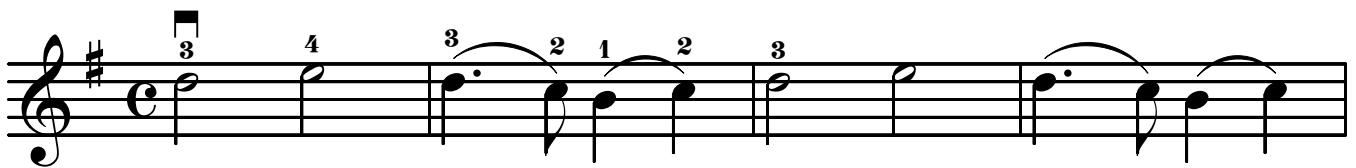
Edited by / Herausgegeben von
Kerstin Wartberg

E: ---00

A: ---00---0---0

D: ---0---00---0

Sicilian Melody, 18th century
Sizilianische Volksweise, 18. Jahrh.



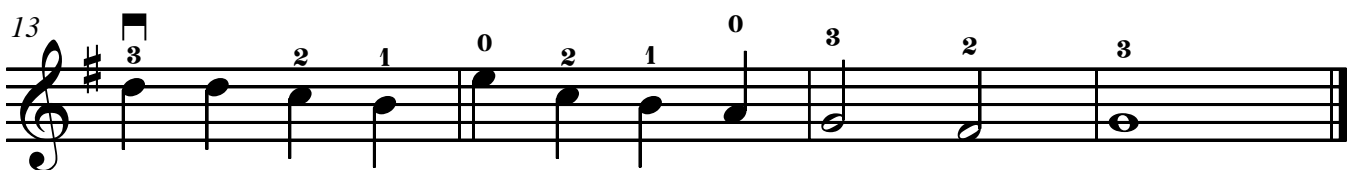
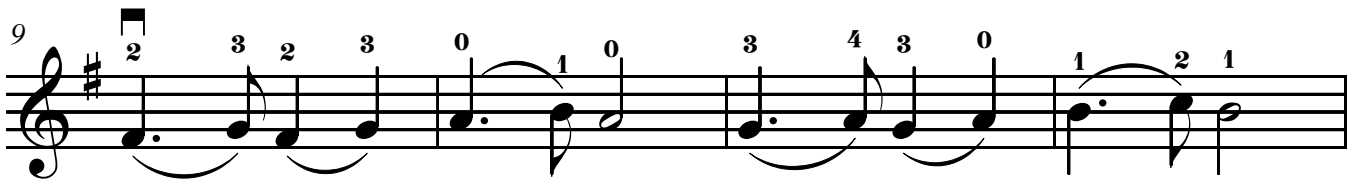
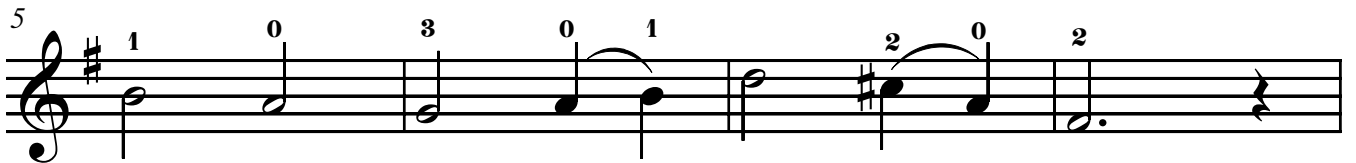
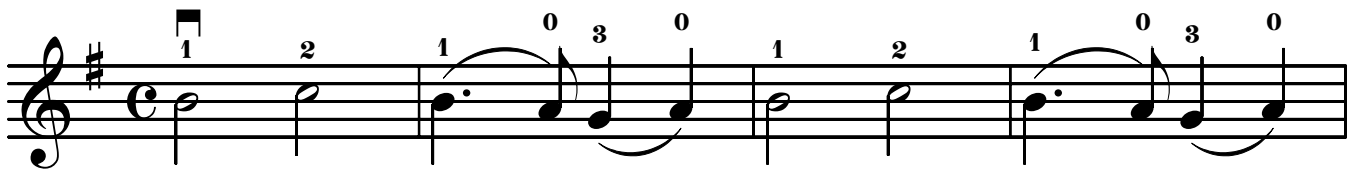
Violin II

O Most Holy One / O du fröhliche

Edited by / Herausgegeben von
Kerstin Wartberg

1 2 2 3 4
A: --0000--0
D: --0--00--0
1 2 3 4

Sicilian Melody, 18th century
Sizilianische Volksweise, 18. Jahrh.



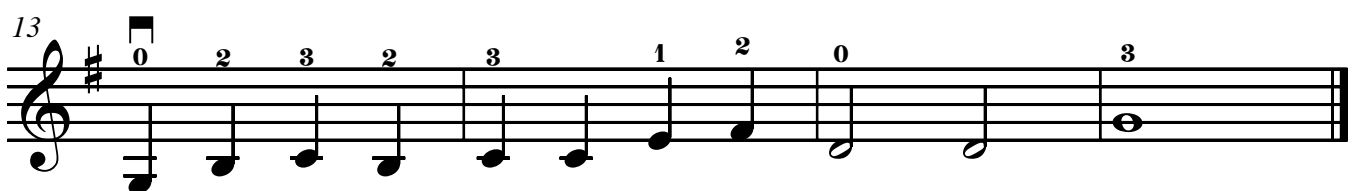
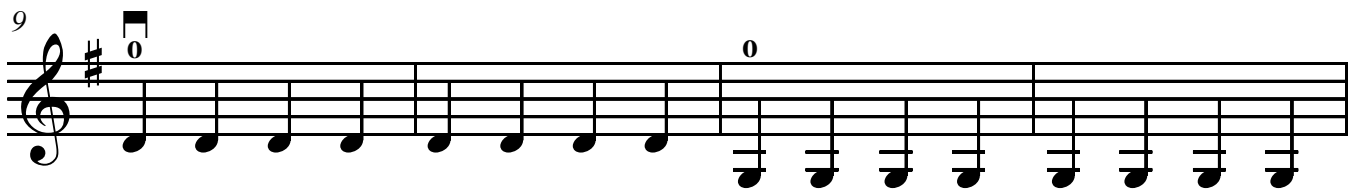
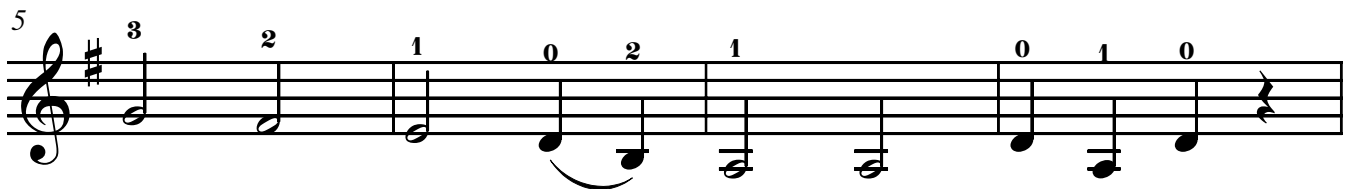
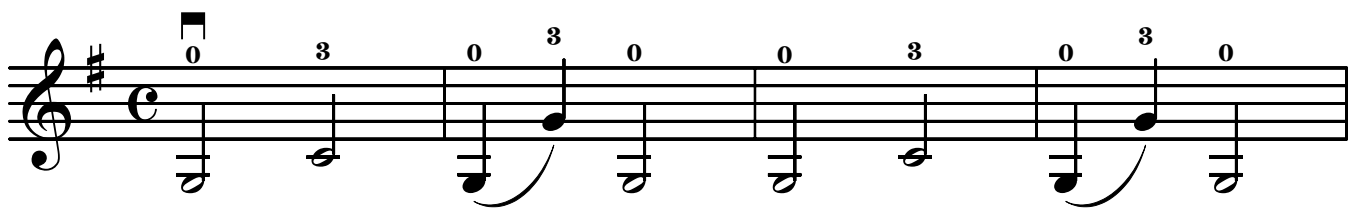
O Most Holy One / O du fröhliche

Edited by / Herausgegeben von
Kerstin Wartberg

D: --0--00--0

G: --0--00--0

Sicilian Melody, 18th century
Sizilianische Volksweise, 18. Jahrh.



O Most Holy One / O du fröhliche

Edited by / Herausgegeben von Kerstin Wartberg

Sicilian Melody, 18th century
Sizilianische Volksweise, 18. Jahrh.

The image displays a musical score for a full ensemble. It is divided into three systems, each containing staves for Violin I, Violin II, Violin III, and Piano. The key signature is one sharp (F#) and the time signature is common time (C). The first system (measures 1-5) features a melody in Violin I and II, with Violin III playing a rhythmic accompaniment. The Piano part provides harmonic support with chords and a bass line. The second system (measures 6-10) continues the melody and accompaniment. The third system (measures 11-15) concludes the piece with a final cadence. The score includes various musical notations such as notes, rests, slurs, and dynamic markings like *ff* (fortissimo).