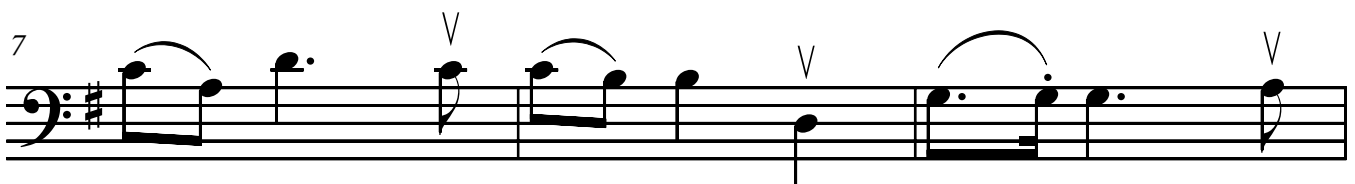
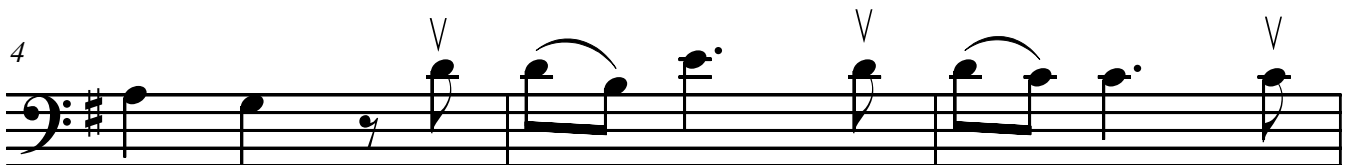
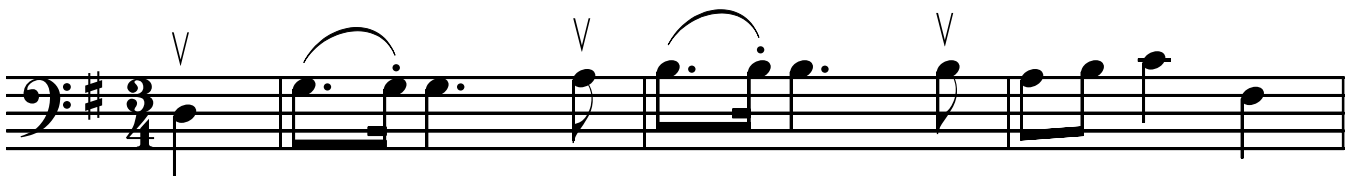


# O Christmas Tree / O Tannenbaum

Edited by / Herausgegeben von  
Kerstin Wartberg

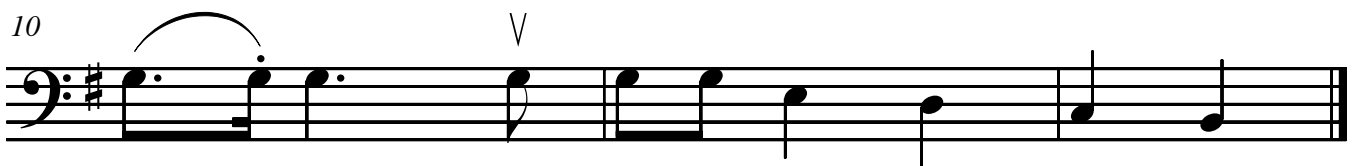
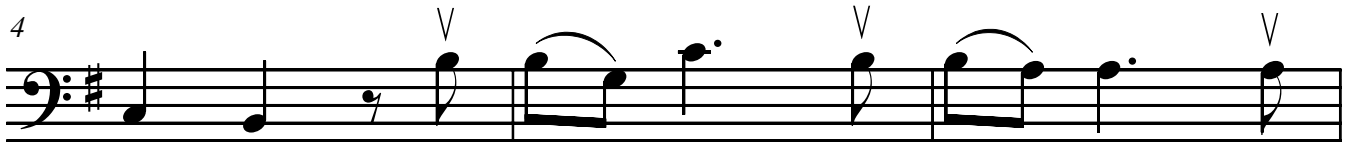
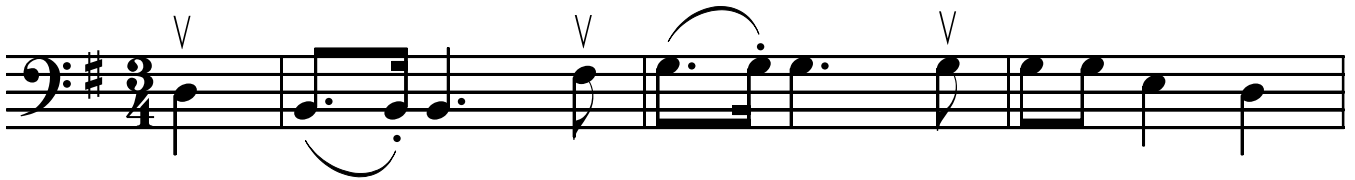
*Folk Song / Volkslied*



# O Christmas Tree / O Tannenbaum

Edited by / Herausgegeben von  
Kerstin Wartberg

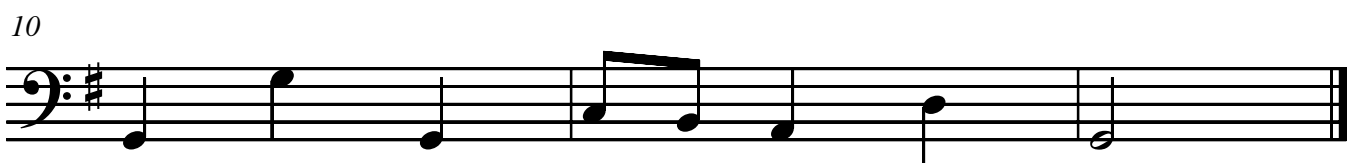
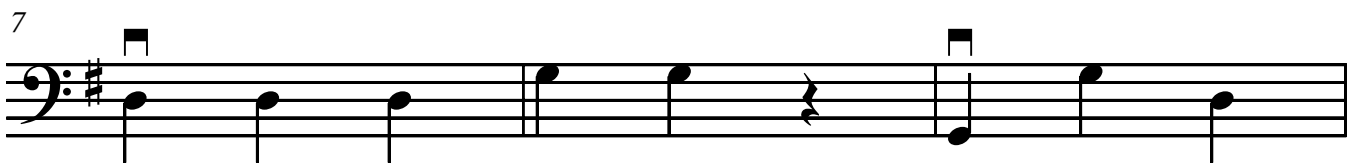
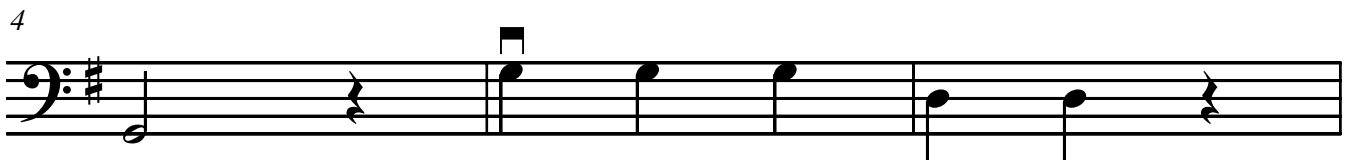
*Folk Song / Volkslied*



# O Christmas Tree / O Tannenbaum

Edited by / Herausgegeben von  
Kerstin Wartberg

*Folk Song / Volkslied*



# O Most Holy One / O Tannenbaum

Edited by / Herausgegeben von Kerstin Wartberg

*Folk Song / Volkslied*

Cello I

Cello II

Cello III

Piano

This system contains the first four measures of the score. It features three cello parts (Cello I, Cello II, and Cello III) and a piano accompaniment. The key signature is one sharp (F#) and the time signature is 3/4. The piano part consists of a right-hand melody and a left-hand accompaniment. The cello parts have various articulations, including accents and slurs.

Vc. I

Vc. II

Vc. III

Piano

This system contains measures 5 through 8. It features three violin parts (Vc. I, Vc. II, and Vc. III) and a piano accompaniment. The key signature is one sharp (F#) and the time signature is 3/4. The piano part continues with its right-hand melody and left-hand accompaniment. The violin parts have various articulations, including accents and slurs.

Vc. I

Vc. II

Vc. III

Piano

This system contains measures 9 through 12, which conclude the piece. It features three violin parts (Vc. I, Vc. II, and Vc. III) and a piano accompaniment. The key signature is one sharp (F#) and the time signature is 3/4. The piano part continues with its right-hand melody and left-hand accompaniment. The violin parts have various articulations, including accents and slurs. The system ends with a double bar line.