

# Silent Night - Stille Nacht

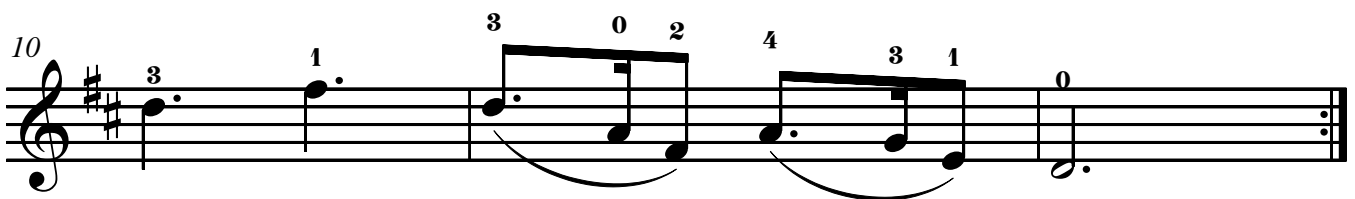
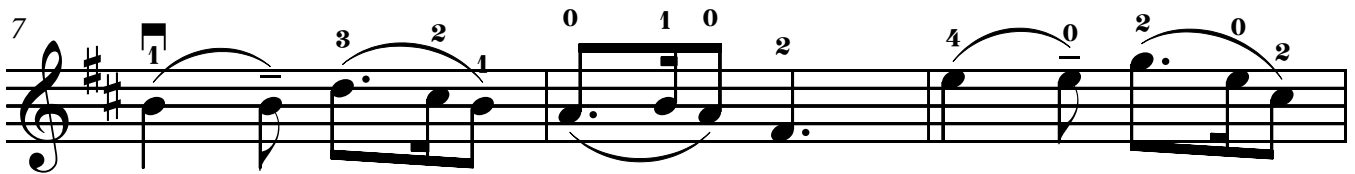
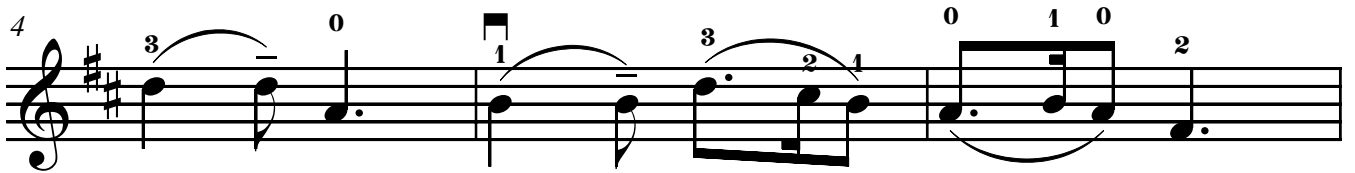
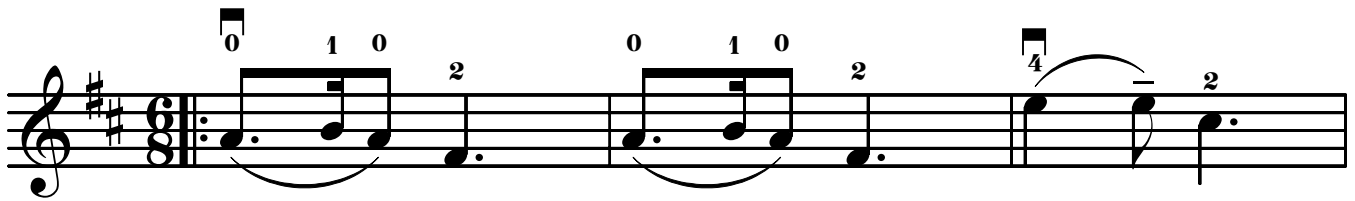
Edited by / Herausgegeben von  
Kerstin Wartberg

**E:** ---00

**A:** ---00---0---0

**D:** ---0---00---0

*Franz Gruber*  
1787 - 1863



# Viola (Violin II)

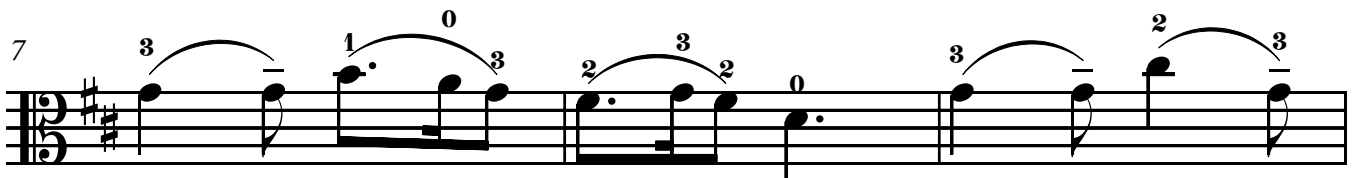
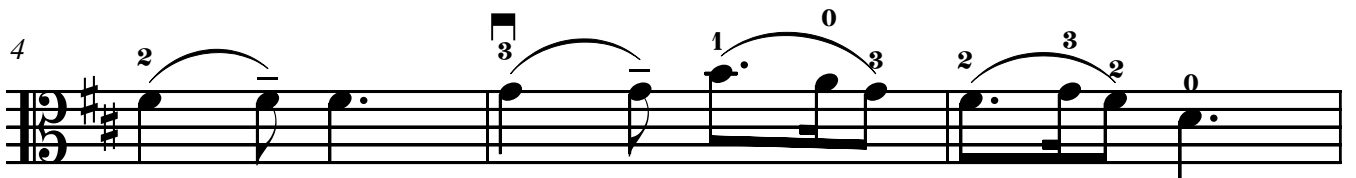
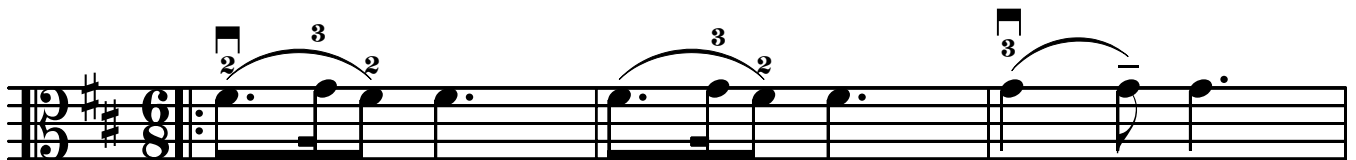
## Silent Night - Stille Nacht

Edited by / Herausgegeben von  
Kerstin Wartberg

A: ---00---0---0

D: ---0---00---0

*Franz Gruber*  
1787 - 1863

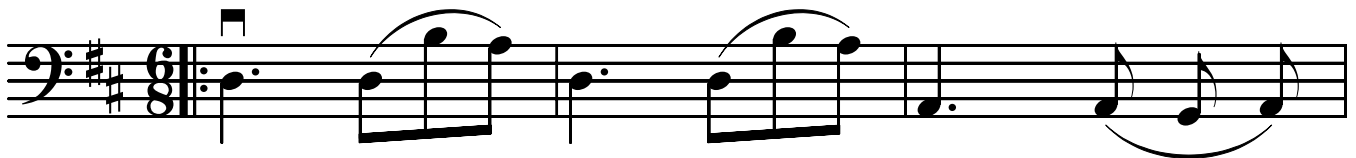


# Cello

## Silent Night - Stille Nacht

Edited by / Herausgegeben von  
Kerstin Wartberg

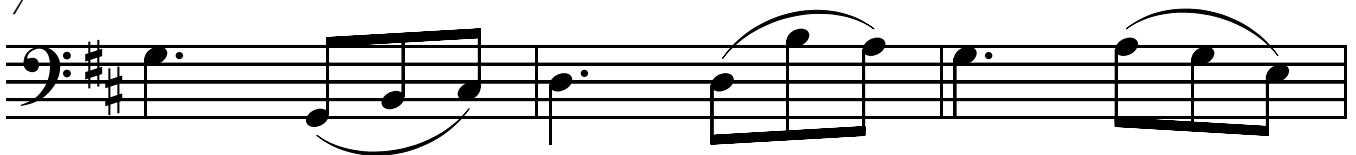
*Franz Gruber*  
1787 - 1863



4



7



10



# Silent Night - Stille Nacht

Edited by / Herausgegeben von Kerstin Wartberg

Franz Gruber  
1787 - 1863

Violin I  
Viola  
Cello  
Piano

Measures 1-4 of the score. The key signature is one sharp (F#) and the time signature is 6/8. The Violin I and Viola parts feature a melodic line with a fermata on the final note of measure 4. The Cello part provides a bass line with a fermata on the final note. The Piano accompaniment consists of chords in the right hand and a rhythmic pattern in the left hand.

VI. I  
Va.  
Cello  
Piano

Measures 5-8 of the score. The Violin I and Viola parts continue the melodic line. The Cello part continues the bass line. The Piano accompaniment continues with chords and a rhythmic pattern.

VI. I  
Va.  
Cello  
Piano

Measures 9-12 of the score. The Violin I and Viola parts conclude the melodic line. The Cello part concludes the bass line. The Piano accompaniment concludes with chords and a rhythmic pattern.